

ORDINANCE NO. 2012-059

Granting encroachment to the University of South Carolina for use of the right of way area of the 1500 block of Greene Street and 800 block of Pickens Street adjacent to USC Petigru College, Richland County TMS #11304-05-01, for installation and maintenance of asphalt pavement, concrete curb, guttering, walkway, brick wall, wrought iron fencing, parking spaces, bike lane, wheel stops, handicap ramp, landscaping and irrigation system

WHEREAS, the University of South Carolina (hereinafter "Grantee") desires to use a portion of the right of way area of the 1500 block of Greene Street and 800 block of Pickens Street adjacent to USC Petigru College, Richland County TMS #11304-05-01, for installation and maintenance of asphalt pavement, concrete curbing, guttering, walkway, brick wall approximately two hundred eighty (280') feet in length and varying in height from six (6") inches to two (2') feet with wrought iron fencing approximately three (3') feet in height and two hundred eighty (280') feet in length along the top of the wall, parking spaces with wheel stops, a bike lane, handicap ramp, landscaping and irrigation system, as shown on the attached drawings; and,

WHEREAS, it appears that the encroachment will not interfere with the use of the medians or street for traffic, utility locations or other uses within the foreseeable future; NOW, THEREFORE,

BE IT ORDAINED by the Mayor and City Council of the City of Columbia, South Carolina, this 18th day of September, 2012, that Grantee is hereby granted the right to use the 1500 block of Greene Street and 800 block of Pickens Street adjacent to USC Petigru College, Richland County TMS #11304-05-01, for installation and maintenance of asphalt pavement, concrete curbing, guttering, walkway, brick wall approximately two hundred eighty (280') feet in length and varying in height from six (6") inches to two (2') feet with wrought iron fencing approximately three (3') feet in height and two hundred eighty (280') feet in length along the top of the wall, parking spaces with wheel stops, a bike lane, handicap ramp, landscaping and irrigation system, as shown on the attached drawings.

ALL WORK SHALL COMPLY with the requirements of The City of Columbia and South Carolina Department of Transportation now in existence or hereafter enacted. The materials and type of finish to be used are to be approved by the City Engineer prior to installation. Any damage to the street or sidewalk caused by construction shall be repaired to the satisfaction of the City Manager. Improvements within the encroachment shall be maintained by the grantee at no cost to the City in a manner approved by the City Manager.

PROVIDED FURTHER that the privilege granted hereby is subject to the Grantee complying with the following conditions, restrictions or limitations:

1. Irrigation must be designed to avoid spraying walkways, sidewalks and streets and/or creating hazardous conditions upon the walkways, sidewalks and streets;
2. All trees shall be protected;

3. Grantee is responsible for all maintenance and assuring that all accessibility and ADA requirements are met and maintained.

4. Grantee is to coordinate existing and proposed crosswalks, ramps and curb cuts to insure proper alignment.

5. Grantee shall mitigate any on-street parking lost due to the project.

PROVIDED FURTHER that the privilege granted hereby may be modified or terminated by Columbia City Council at any time without notice to the Grantee, its successors and assigns.


BE IT FURTHER ORDAINED that Grantee, in consideration of the above privilege, shall at its expense provide for protection and relocation of all utilities that might be within this area to the satisfaction of the City Manager.

Requested by:


University of South Carolina


MAYOR

Approved by:


City Manager

Approved as to form:


City Attorney

ATTEST:

City Clerk

Introduced: 9/4/2012

Final Reading: 9/18/2012

**CITY COUNCIL
ENCROACHMENT SUMMARY
2012-059**



**1500 BLOCK OF GREENE STREET
800 BLOCK OF PICKENS STREET
ADJACENT TO USC PETIGRU COLLEGE
WALKWAY, BICYCLE LANES, LANDSCAPING AND
ROADWAY IMPROVEMENTS**

Subject Property:	Right-of-way adjacent to USC Petigru College, 1500 Block of Greene Street and 800 Block of Pickens Street, TMS#11304-05-01
Council District:	3
Proposal:	The applicant requesting an encroachment for installation and maintenance of asphalt pavement, concrete curb, guttering, walkway, parking spaces, bike lane, wheel stops, handicap ramp, landscaping and irrigation system.
Applicant:	University of South Carolina
Staff Recommendation:	Approval

Detail:	<p>The applicant requesting an encroachment for installation and maintenance of asphalt pavement, concrete curb, guttering, walkway, parking spaces, bike lane, wheel stops, handicap ramp, landscaping and irrigation system, as shown on the attached drawings (prepared by GMK Associates, Inc. for the University of South Carolina, titled Gibbs Green Historic Facilities Renovation – USC Petigru College Renovations, Site and Water Plan, Sheet Number C2R, last revised 8/22/12).</p> <p>The applicant has worked with staff regarding the removal and mitigation of the metered parking spaces along Greene Street and design of the bicycle lane. Conditions of the proposed encroachment are as follows:</p> <ol style="list-style-type: none"> 1. Irrigation must be designed to avoid spraying walkways, sidewalks and streets and/or creating hazardous conditions upon the walkways, sidewalks and streets; 2. All trees shall be protected; 3. Grantee is responsible for all maintenance and assuring that all accessibility and ADA requirements are met and maintained. 4. Grantee is to coordinate existing and proposed crosswalks, ramps and curb cuts to insure proper alignment. 5. Grantee shall mitigate any on-street parking lost due to the project.
----------------	--

CITY AGENCY COMMENTS FOR ENCROACHMENT	
Planning & Development Services	Recommend approval.
Streets	Recommend approval.
Utilities and Engineering	Recommend approval.
Traffic Engineering	Recommend approval with the following condition: Stop bar extend across the bike lane.
Forestry	Recommend approval.

Land Development	Recommend approval.
Fire	Recommend approval.

NOTES

IT IS CONTRACTOR'S RESPONSIBILITY TO VERIFY THAT THEY AND THEIR SUBCONTRACTORS HAVE THE CORRECT/MOST UP-TO-DATE PLANS AVAILABLE.

CALL 811

CALL BEFORE YOU DIG!

THE PUBLIC UTILITIES TRANSMISSION BOARD (P.U.T.B.) HAS A 24 HOUR TOLL FREE NUMBER FOR INFORMATION ON THE CALL BEFORE YOU DIG PROGRAM.

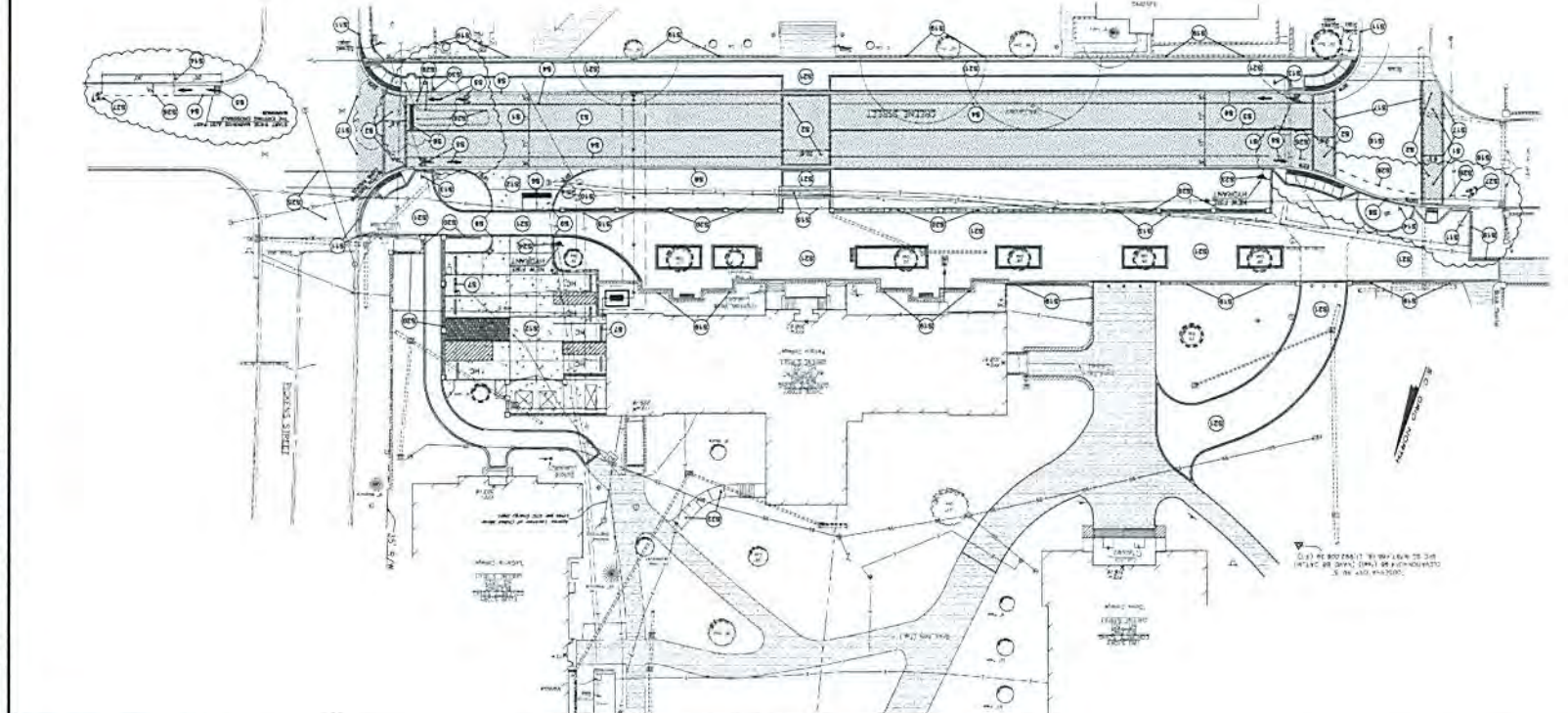
1. CALL 811 AT LEAST 48 HOURS BEFORE ANY EXCAVATION OR DISTURBANCE OF THE EARTH SURFACE.

2. CALL 811 AT LEAST 24 HOURS BEFORE ANY EXCAVATION OR DISTURBANCE OF THE EARTH SURFACE IN AN AREA THAT HAS BEEN IDENTIFIED AS A HIGH RISK AREA.

3. CALL 811 AT LEAST 24 HOURS BEFORE ANY EXCAVATION OR DISTURBANCE OF THE EARTH SURFACE IN AN AREA THAT IS ADJACENT TO A HIGH VOLTAGE TRANSMISSION LINE.

4. CALL 811 AT LEAST 24 HOURS BEFORE ANY EXCAVATION OR DISTURBANCE OF THE EARTH SURFACE IN AN AREA THAT IS ADJACENT TO A HIGH VOLTAGE TRANSMISSION LINE AND A HIGH RISK AREA.

5. CALL 811 AT LEAST 24 HOURS BEFORE ANY EXCAVATION OR DISTURBANCE OF THE EARTH SURFACE IN AN AREA THAT IS ADJACENT TO A HIGH VOLTAGE TRANSMISSION LINE AND A HIGH RISK AREA AND IS ADJACENT TO A HIGH VOLTAGE TRANSMISSION LINE.



NOTES REGARDING PARKING LOT SIGNAGE

(1) THE CONTRACTOR SHALL PROVIDE AND INSTALL ALL SIGNAGE REQUIRED FOR THE PARKING LOTS AND DRIVEWAYS AS SHOWN ON THESE PLANS.

(2) THE CONTRACTOR SHALL PROVIDE ALL SIGNAGE IN ACCORDANCE WITH THE SIGNAGE MANUAL AND THE SIGNAGE SPECIFICATIONS.

(3) THE CONTRACTOR SHALL PROVIDE ALL SIGNAGE IN ACCORDANCE WITH THE SIGNAGE MANUAL AND THE SIGNAGE SPECIFICATIONS.

(4) THE CONTRACTOR SHALL PROVIDE ALL SIGNAGE IN ACCORDANCE WITH THE SIGNAGE MANUAL AND THE SIGNAGE SPECIFICATIONS.

(5) THE CONTRACTOR SHALL PROVIDE ALL SIGNAGE IN ACCORDANCE WITH THE SIGNAGE MANUAL AND THE SIGNAGE SPECIFICATIONS.

(6) THE CONTRACTOR SHALL PROVIDE ALL SIGNAGE IN ACCORDANCE WITH THE SIGNAGE MANUAL AND THE SIGNAGE SPECIFICATIONS.

(7) THE CONTRACTOR SHALL PROVIDE ALL SIGNAGE IN ACCORDANCE WITH THE SIGNAGE MANUAL AND THE SIGNAGE SPECIFICATIONS.

(8) THE CONTRACTOR SHALL PROVIDE ALL SIGNAGE IN ACCORDANCE WITH THE SIGNAGE MANUAL AND THE SIGNAGE SPECIFICATIONS.

(9) THE CONTRACTOR SHALL PROVIDE ALL SIGNAGE IN ACCORDANCE WITH THE SIGNAGE MANUAL AND THE SIGNAGE SPECIFICATIONS.

(10) THE CONTRACTOR SHALL PROVIDE ALL SIGNAGE IN ACCORDANCE WITH THE SIGNAGE MANUAL AND THE SIGNAGE SPECIFICATIONS.

NOTES REGARDING PARKING LOT STRIPING

(1) THE CONTRACTOR SHALL PROVIDE AND INSTALL ALL STRIPING REQUIRED FOR THE PARKING LOTS AND DRIVEWAYS AS SHOWN ON THESE PLANS.

(2) THE CONTRACTOR SHALL PROVIDE ALL STRIPING IN ACCORDANCE WITH THE STRIPING MANUAL AND THE STRIPING SPECIFICATIONS.

(3) THE CONTRACTOR SHALL PROVIDE ALL STRIPING IN ACCORDANCE WITH THE STRIPING MANUAL AND THE STRIPING SPECIFICATIONS.

(4) THE CONTRACTOR SHALL PROVIDE ALL STRIPING IN ACCORDANCE WITH THE STRIPING MANUAL AND THE STRIPING SPECIFICATIONS.

(5) THE CONTRACTOR SHALL PROVIDE ALL STRIPING IN ACCORDANCE WITH THE STRIPING MANUAL AND THE STRIPING SPECIFICATIONS.

(6) THE CONTRACTOR SHALL PROVIDE ALL STRIPING IN ACCORDANCE WITH THE STRIPING MANUAL AND THE STRIPING SPECIFICATIONS.

(7) THE CONTRACTOR SHALL PROVIDE ALL STRIPING IN ACCORDANCE WITH THE STRIPING MANUAL AND THE STRIPING SPECIFICATIONS.

(8) THE CONTRACTOR SHALL PROVIDE ALL STRIPING IN ACCORDANCE WITH THE STRIPING MANUAL AND THE STRIPING SPECIFICATIONS.

(9) THE CONTRACTOR SHALL PROVIDE ALL STRIPING IN ACCORDANCE WITH THE STRIPING MANUAL AND THE STRIPING SPECIFICATIONS.

(10) THE CONTRACTOR SHALL PROVIDE ALL STRIPING IN ACCORDANCE WITH THE STRIPING MANUAL AND THE STRIPING SPECIFICATIONS.

NOTES

(1) THE CONTRACTOR SHALL PROVIDE AND INSTALL ALL SIGNAGE AND STRIPING REQUIRED FOR THE PARKING LOTS AND DRIVEWAYS AS SHOWN ON THESE PLANS.

(2) THE CONTRACTOR SHALL PROVIDE ALL SIGNAGE AND STRIPING IN ACCORDANCE WITH THE SIGNAGE AND STRIPING MANUALS AND SPECIFICATIONS.

(3) THE CONTRACTOR SHALL PROVIDE ALL SIGNAGE AND STRIPING IN ACCORDANCE WITH THE SIGNAGE AND STRIPING MANUALS AND SPECIFICATIONS.

(4) THE CONTRACTOR SHALL PROVIDE ALL SIGNAGE AND STRIPING IN ACCORDANCE WITH THE SIGNAGE AND STRIPING MANUALS AND SPECIFICATIONS.

(5) THE CONTRACTOR SHALL PROVIDE ALL SIGNAGE AND STRIPING IN ACCORDANCE WITH THE SIGNAGE AND STRIPING MANUALS AND SPECIFICATIONS.

(6) THE CONTRACTOR SHALL PROVIDE ALL SIGNAGE AND STRIPING IN ACCORDANCE WITH THE SIGNAGE AND STRIPING MANUALS AND SPECIFICATIONS.

(7) THE CONTRACTOR SHALL PROVIDE ALL SIGNAGE AND STRIPING IN ACCORDANCE WITH THE SIGNAGE AND STRIPING MANUALS AND SPECIFICATIONS.

(8) THE CONTRACTOR SHALL PROVIDE ALL SIGNAGE AND STRIPING IN ACCORDANCE WITH THE SIGNAGE AND STRIPING MANUALS AND SPECIFICATIONS.

(9) THE CONTRACTOR SHALL PROVIDE ALL SIGNAGE AND STRIPING IN ACCORDANCE WITH THE SIGNAGE AND STRIPING MANUALS AND SPECIFICATIONS.

(10) THE CONTRACTOR SHALL PROVIDE ALL SIGNAGE AND STRIPING IN ACCORDANCE WITH THE SIGNAGE AND STRIPING MANUALS AND SPECIFICATIONS.

REFERENCES

(1) THE SIGNAGE MANUAL AND THE STRIPING MANUAL AND THE SIGNAGE AND STRIPING SPECIFICATIONS.

(2) THE SIGNAGE MANUAL AND THE STRIPING MANUAL AND THE SIGNAGE AND STRIPING SPECIFICATIONS.

(3) THE SIGNAGE MANUAL AND THE STRIPING MANUAL AND THE SIGNAGE AND STRIPING SPECIFICATIONS.

(4) THE SIGNAGE MANUAL AND THE STRIPING MANUAL AND THE SIGNAGE AND STRIPING SPECIFICATIONS.

(5) THE SIGNAGE MANUAL AND THE STRIPING MANUAL AND THE SIGNAGE AND STRIPING SPECIFICATIONS.

(6) THE SIGNAGE MANUAL AND THE STRIPING MANUAL AND THE SIGNAGE AND STRIPING SPECIFICATIONS.

(7) THE SIGNAGE MANUAL AND THE STRIPING MANUAL AND THE SIGNAGE AND STRIPING SPECIFICATIONS.

(8) THE SIGNAGE MANUAL AND THE STRIPING MANUAL AND THE SIGNAGE AND STRIPING SPECIFICATIONS.

(9) THE SIGNAGE MANUAL AND THE STRIPING MANUAL AND THE SIGNAGE AND STRIPING SPECIFICATIONS.

(10) THE SIGNAGE MANUAL AND THE STRIPING MANUAL AND THE SIGNAGE AND STRIPING SPECIFICATIONS.

PAVING LEGEND

- CONCRETE PAVEMENT AREA
- ASPHALT
- GRAVEL
- GRAVEL DRIVE
- GRAVEL DRIVEWAY

PAVING LEGEND

- CONCRETE PAVEMENT AREA
- ASPHALT
- GRAVEL
- GRAVEL DRIVE
- GRAVEL DRIVEWAY

COOLED SITE NOTES

(81) THE CONTRACTOR SHALL PROVIDE AND INSTALL ALL SIGNAGE AND STRIPING REQUIRED FOR THE PARKING LOTS AND DRIVEWAYS AS SHOWN ON THESE PLANS.

(82) THE CONTRACTOR SHALL PROVIDE ALL SIGNAGE AND STRIPING IN ACCORDANCE WITH THE SIGNAGE AND STRIPING MANUALS AND SPECIFICATIONS.

(83) THE CONTRACTOR SHALL PROVIDE ALL SIGNAGE AND STRIPING IN ACCORDANCE WITH THE SIGNAGE AND STRIPING MANUALS AND SPECIFICATIONS.

(84) THE CONTRACTOR SHALL PROVIDE ALL SIGNAGE AND STRIPING IN ACCORDANCE WITH THE SIGNAGE AND STRIPING MANUALS AND SPECIFICATIONS.

(85) THE CONTRACTOR SHALL PROVIDE ALL SIGNAGE AND STRIPING IN ACCORDANCE WITH THE SIGNAGE AND STRIPING MANUALS AND SPECIFICATIONS.

(86) THE CONTRACTOR SHALL PROVIDE ALL SIGNAGE AND STRIPING IN ACCORDANCE WITH THE SIGNAGE AND STRIPING MANUALS AND SPECIFICATIONS.

(87) THE CONTRACTOR SHALL PROVIDE ALL SIGNAGE AND STRIPING IN ACCORDANCE WITH THE SIGNAGE AND STRIPING MANUALS AND SPECIFICATIONS.

(88) THE CONTRACTOR SHALL PROVIDE ALL SIGNAGE AND STRIPING IN ACCORDANCE WITH THE SIGNAGE AND STRIPING MANUALS AND SPECIFICATIONS.

(89) THE CONTRACTOR SHALL PROVIDE ALL SIGNAGE AND STRIPING IN ACCORDANCE WITH THE SIGNAGE AND STRIPING MANUALS AND SPECIFICATIONS.

(90) THE CONTRACTOR SHALL PROVIDE ALL SIGNAGE AND STRIPING IN ACCORDANCE WITH THE SIGNAGE AND STRIPING MANUALS AND SPECIFICATIONS.

G.M.K. ASSOCIATES, INC.

1271 W. MARKET STREET, SUITE 2100
 COLUMBIA, S.C. 29201
 PH: 803-252-0000
 FAX: 803-252-7540

COX AND DIXON

1170000
 0504002

SOUTH CAROLINA

CONSTRUCTION DOCUMENTS
 MAY 12, 2011

1. PROJECT NAME
 2. DATE
 3. SHEET NO.

C2R

SITE AND WATER PLAN

C2R

SITE AND WATER PLAN

PETIGRU COLLEGE

CONSTRUCTION DOCUMENTS

MAY 12, 2011

COX AND DIXON

SOUTH CAROLINA

CONSTRUCTION DOCUMENTS

MAY 12, 2011

C2R

SITE AND WATER PLAN

PETIGRU COLLEGE

9-7

PLANTING



DATE: MAY 12, 2011

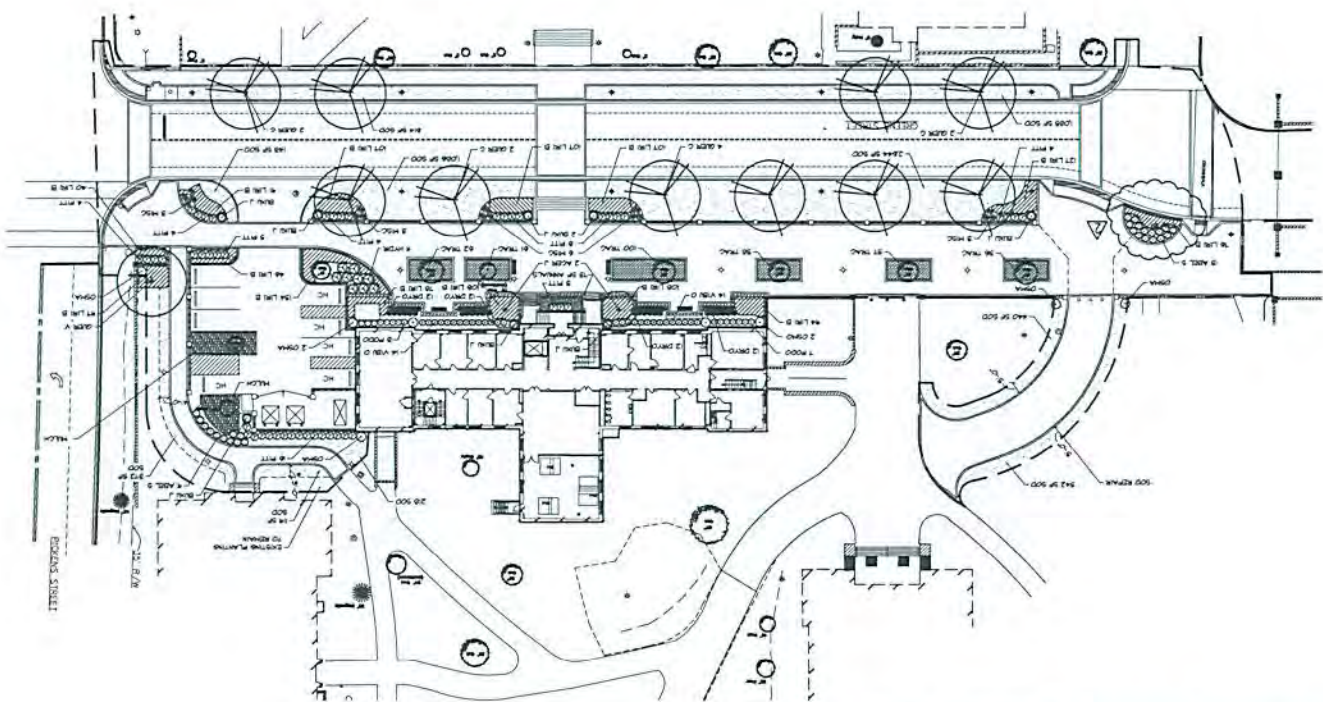
PROJECT: USG CAMPUS PLANNING AND CONSTRUCTION DOCUMENTS

DATE: 12/13

PROJECT: USG GREEN HISTORIC FACILITIES RENOVATION - USG PETTIGU COLLEGE RENOVATIONS

DATE: 12/13

PROJECT: USG GREEN HISTORIC FACILITIES RENOVATION - USG PETTIGU COLLEGE RENOVATIONS



PLANT LIST

NO.	COMMON NAME	SCIENTIFIC NAME	HEIGHT	SPACING	PLANTING	REMARKS
1	SPRING BURNING BUSH	EXCERPTUM	12'	30'	PLANT 2 O.C.	
2	SPRING BURNING BUSH	EXCERPTUM	12'	30'	PLANT 3 O.C.	
3	SPRING BURNING BUSH	EXCERPTUM	12'	30'	PLANT 4 O.C.	
4	SPRING BURNING BUSH	EXCERPTUM	12'	30'	PLANT 5 O.C.	
5	SPRING BURNING BUSH	EXCERPTUM	12'	30'	PLANT 6 O.C.	
6	SPRING BURNING BUSH	EXCERPTUM	12'	30'	PLANT 7 O.C.	
7	SPRING BURNING BUSH	EXCERPTUM	12'	30'	PLANT 8 O.C.	
8	SPRING BURNING BUSH	EXCERPTUM	12'	30'	PLANT 9 O.C.	
9	SPRING BURNING BUSH	EXCERPTUM	12'	30'	PLANT 10 O.C.	
10	SPRING BURNING BUSH	EXCERPTUM	12'	30'	PLANT 11 O.C.	
11	SPRING BURNING BUSH	EXCERPTUM	12'	30'	PLANT 12 O.C.	
12	SPRING BURNING BUSH	EXCERPTUM	12'	30'	PLANT 13 O.C.	
13	SPRING BURNING BUSH	EXCERPTUM	12'	30'	PLANT 14 O.C.	
14	SPRING BURNING BUSH	EXCERPTUM	12'	30'	PLANT 15 O.C.	
15	SPRING BURNING BUSH	EXCERPTUM	12'	30'	PLANT 16 O.C.	



ARCHITECT: GRIMBALL ASSOCIATES, INC.

1207 MAIN STREET, SUITE 2100

COLUMBIA, SC 29201

TEL: 803-256-0000

FAX: 803-255-2424

PROJECT: USG CAMPUS PLANNING AND CONSTRUCTION DOCUMENTS

743 GREEN STREET

COLUMBIA, SOUTH CAROLINA 29208

PROJECT NAME: USG GREEN HISTORIC FACILITIES RENOVATION - USG PETTIGU COLLEGE RENOVATIONS

OSI # HZ-9935-GW-B

45' PERMITS

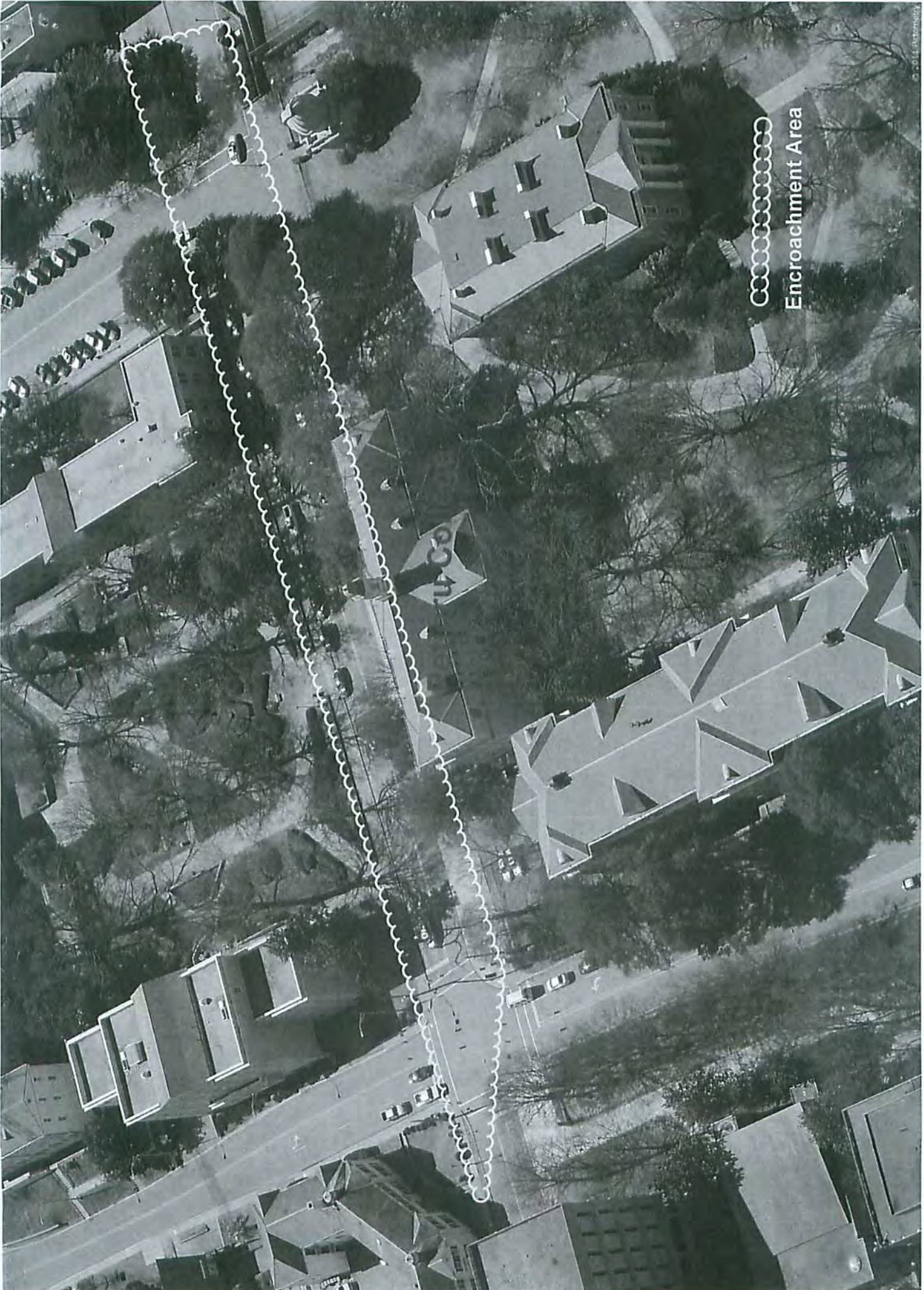
0504022

LANDSCAPE ARCHITECTS & LAND MANAGERS

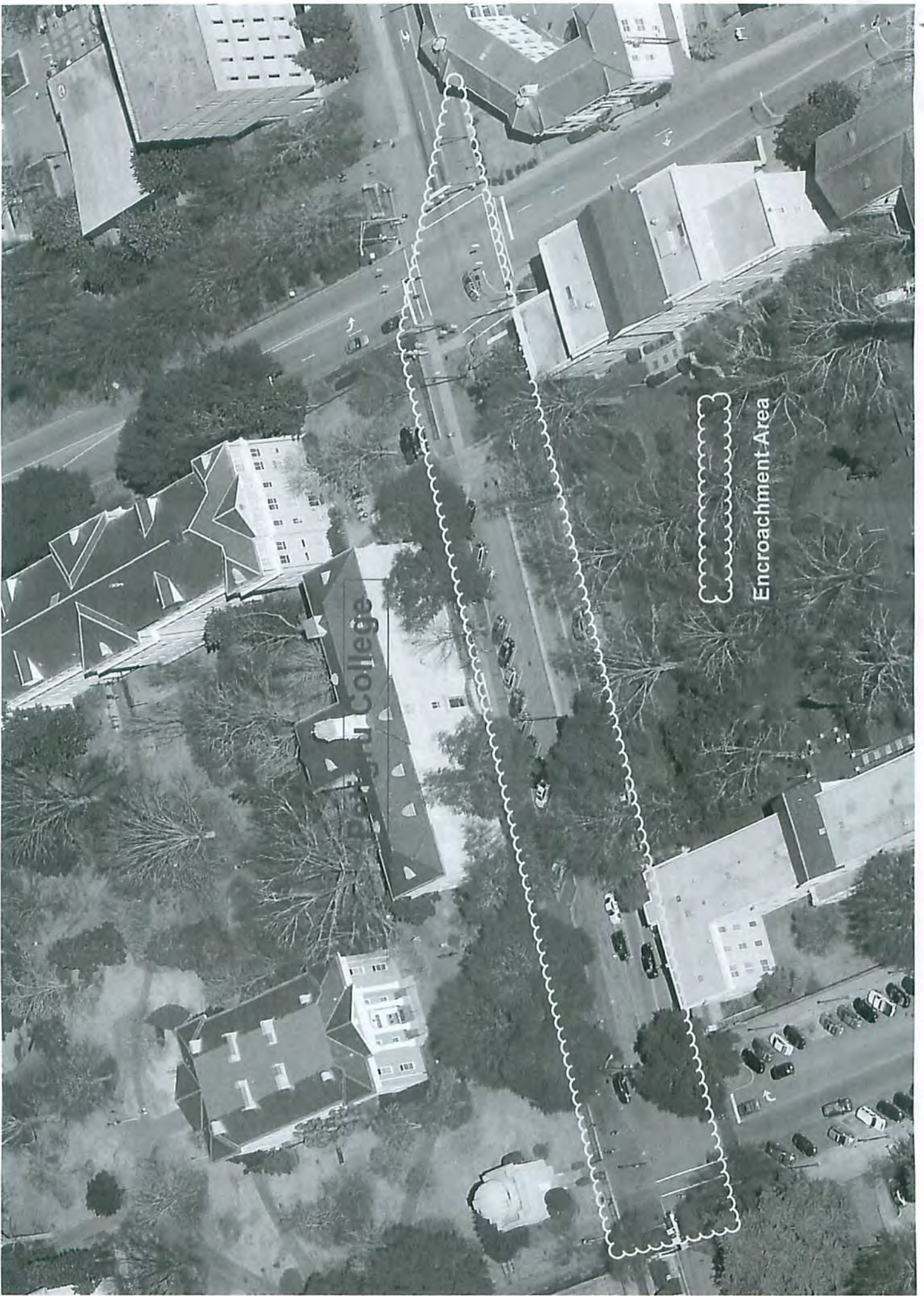
GRIMBALL ASSOCIATES

COTTEHILL





Encroachment Area



Encroachment Area

Piedmont College