

ORDINANCE 2009-033

Granting an easement to South Carolina Electric & Gas Company ("SCE&G") for the installation of utilities along a portion of City property for the Hydrogen Fueling Station; Richland County TMS# 09006-08-03(portion); CF#310-22A

WHEREAS, South Carolina Electric and Gas Company ("SCE&G") desires an easement to construct new electric lines and all appurtenances necessary to provide service to the hydrogen fueling station currently under construction; and

WHEREAS, the plans for the proposed utility installation have been reviewed and approved by the Engineering Division and there are no conflicts with existing City utilities; NOW, THEREFORE,

BE IT ORDAINED by the Mayor and City Council of the City of Columbia, South Carolina this 15th day of April, 2009, for and in consideration of the sum of One (\$1.00) Dollar, each to the other paid, the City Manager is hereby authorized to execute an easement on behalf of the City of Columbia to SOUTH CAROLINA ELECTRIC & GAS COMPANY for ingress, egress, installation and maintenance of electric lines and all appurtenances necessary to provide service to the referenced property.

The referenced easement is shown on a drawing prepared for service to the City of Columbia Hydrogen Fueling Station by South Carolina Electric & Gas Company, dated August 29, 2008, last revised October 17, 2008, and being on file in the office of the Department of Utilities and Engineering under file reference #310-22A. Reference is made to exhibit "A" attached hereto and made a part hereof.

Requested by:

Utilities & Engineering Department

Mayor

Approved by:

Interim City Manager

Approved as to form:

City Attorney

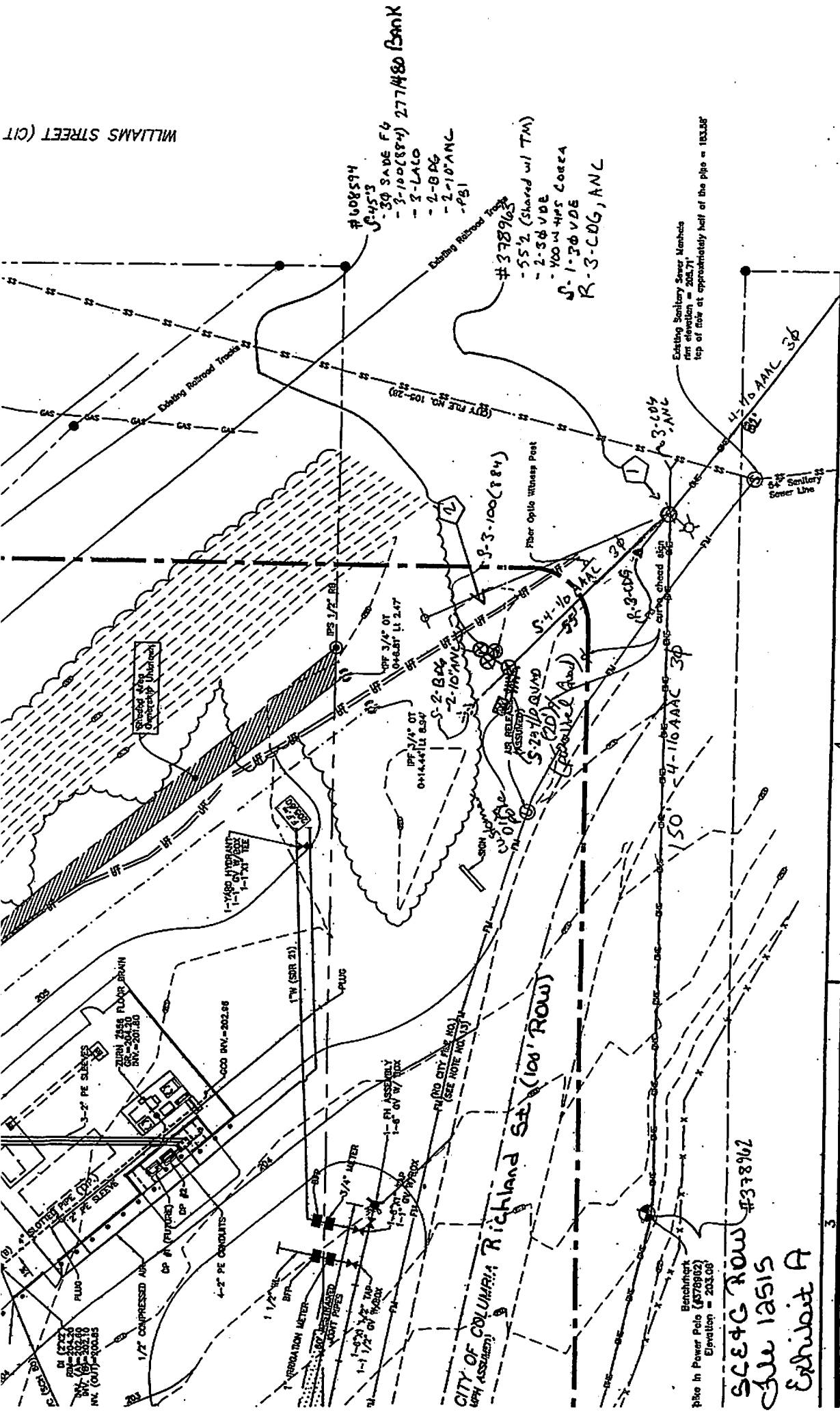
Introduced: 4/1/2009

Final Reading: 4/15/2009

ATTEST:

City Clerk

ORIGINAL
STAMPED IN RED



#60594
 S-453
 -30 SADE F6
 -3-100(8PM) 277#80 BANK
 -3-LALO
 -2-BDG
 -2-10'ANL
 -PB1

#378963
 -55'2 (Shared w/ TM)
 -2-30 VDE
 -100 W-TIPS CORZA
 S-1-30 VDE
 R-3-COG, ANL

Existing Sanitary Sewer Manhole
 rim elevation = 205.71'
 top of flow at approximately half of the pipe = 183.56'

CF# 310-22A

Benchmark
 pipe in Power Poles (#378962)
 Elevation = 203.08'

SCEFC ROW #378962
 File 12515
 Exhibit A